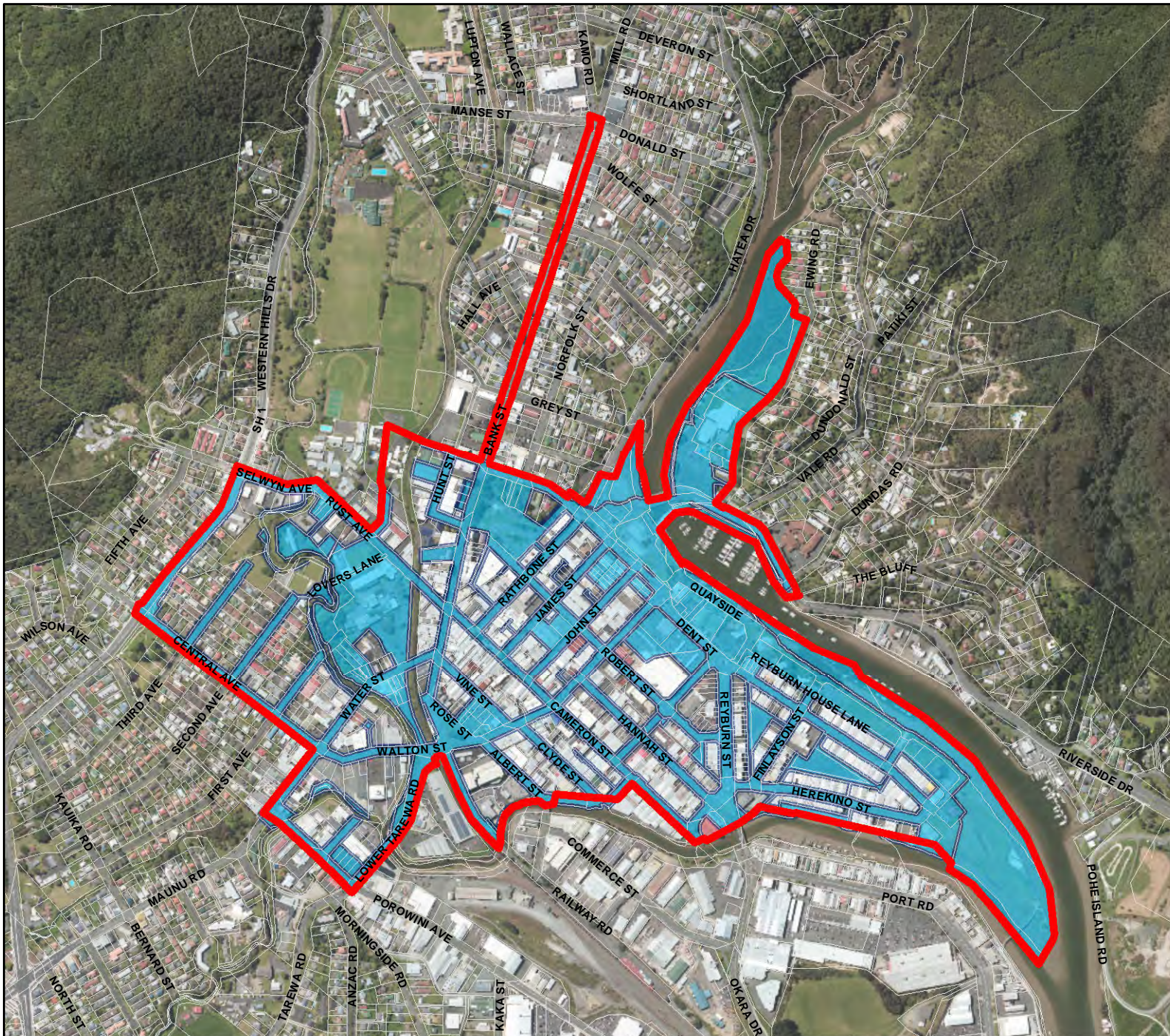




Whangarei District Council – Alcohol Control Bylaw 2018

Alcohol Control Areas – made by Council resolution

Map #	Area	Operative times	Decision date	Commencement date
1	Whangarei CBD	24 hours a day, seven days a week	13/12/2018	19/12/2018
2	Kamo			
3	Marsden Village			
4	Matapouri			
5	Oakura			
6	Onerahi			
7	Otaika			
8	Otangarei			
9	Otuihau; Whangarei Falls			
10	Pataua North & South			
11	Tikipunga			
12	Waipu			
13	Whananaki – Moureeses Bay			
14	Whananaki			
NA	All public places 300 metres landwards from the line of mean low water springs			



MAP 1 - CENTRAL BUSINESS DISTRICT

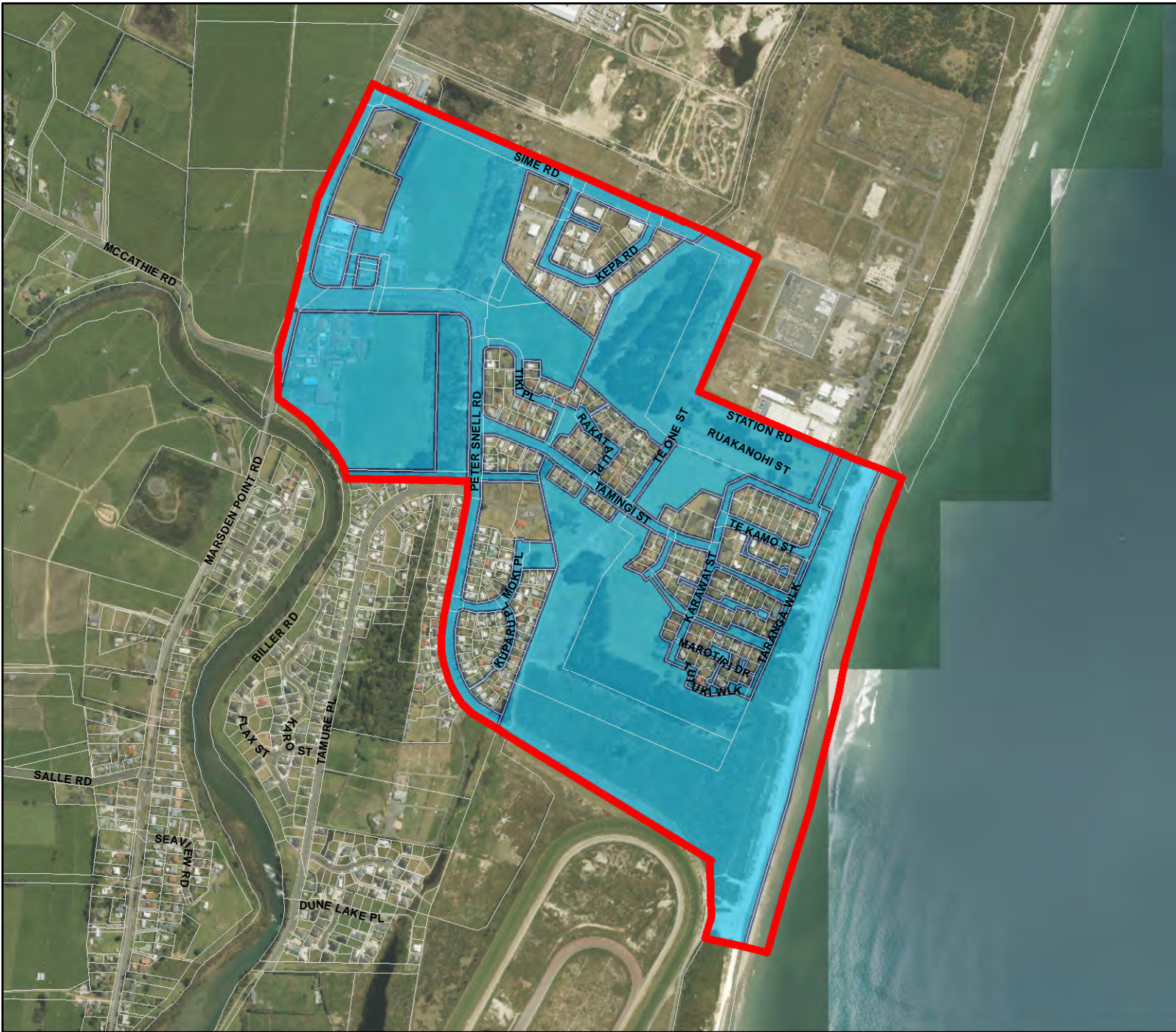
-  Alcohol Control Area Boundary
-  Public Place

Operative times:
24 hours a day, 7 days a week


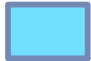
This map provides indicative public places within the alcohol control area. It is up to constable discretion to determine whether a place is a public place in accordance with section 147 of the Local Government Act 2002 for enforcement purposes, and may include a location that is not indicated as a public place within the alcohol control area boundaries.



(C) Crown Copyright Reserved.
Data sourced from Land Information New Zealand Data Service. Licensed for re-use under the Creative Commons Attribution 4.0 International Licence.
The information in this map was derived from digital databases. Care was taken in the creation of this map, however, Whangarei District Council and its contactors cannot accept any responsibility for errors, omissions or positional accuracy. Not to be used for navigation.
Public places shown as indicative. Mean low water springs shown as indicative.



MAP 3 - MARSDEN VILLAGE

-  Alcohol Control Area Boundary
-  Public Place


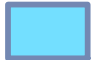
Operative times:
24 hours a day, 7 days a week

This map provides indicative public places within the alcohol control area. It is up to constable discretion to determine whether a place is a public place in accordance with section 147 of the Local Government Act 2002 for enforcement purposes, and may include a location that is not indicated as a public place within the alcohol control area boundaries.



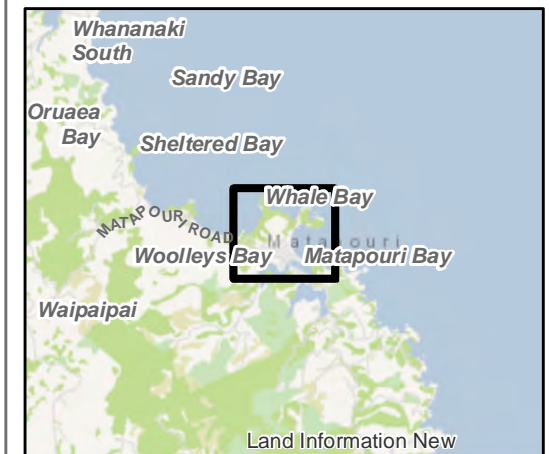
(C) Crown Copyright Reserved.
Data sourced from Land Information New Zealand Data Service. Licensed for re-use under the Creative Commons Attribution 4.0 International Licence.
The information in this map was derived from digital databases. Care was taken in the creation of this map, however, Whangarei District Council and its contactors cannot accept any responsibility for errors, omissions or positional accuracy. Not to be used for navigation.
Public places shown as indicative. Mean low water springs shown as indicative.

MAP 4 - MATAPOURI

-  Alcohol Control Area Boundary
-  Public Place

Operative times:
24 hours a day, 7 days a week

This map provides indicative public places within the alcohol control area. It is up to constable discretion to determine whether a place is a public place in accordance with section 147 of the Local Government Act 2002 for enforcement purposes, and may include a location that is not indicated as a public place within the alcohol control area boundaries.


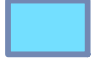


(C) Crown Copyright Reserved.
Data sourced from Land Information New Zealand Data Service. Licensed for re-use under the Creative Commons Attribution 4.0 International Licence.
The information in this map was derived from digital databases. Care was taken in the creation of this map, however, Whangarei District Council and its contactors cannot accept any responsibility for errors, omissions or positional accuracy. Not to be used for navigation.
Public places shown as indicative. Mean low water springs shown as indicative.





MAP 5 - OAKURA

-  Alcohol Control Area Boundary
-  Public Place

Operative times:
24 hours a day, 7 days a week



This map provides indicative public places within the alcohol control area. It is up to constable discretion to determine whether a place is a public place in accordance with section 147 of the Local Government Act 2002 for enforcement purposes, and may include a location that is not indicated as a public place within the alcohol control area boundaries.



(C) Crown Copyright Reserved.
Data sourced from Land Information New Zealand Data Service. Licensed for re-use under the Creative Commons Attribution 4.0 International Licence.
The information in this map was derived from digital databases. Care was taken in the creation of this map, however, Whangarei District Council and its contactors cannot accept any responsibility for errors, omissions or positional accuracy. Not to be used for navigation.
Public places shown as indicative. Mean low water springs shown as indicative.



MAP 6 - ONERAHI

-  Alcohol Control Area Boundary
-  Public Place

Operative times:
24 hours a day, 7 days a week


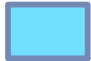
This map provides indicative public places within the alcohol control area. It is up to constable discretion to determine whether a place is a public place in accordance with section 147 of the Local Government Act 2002 for enforcement purposes, and may include a location that is not indicated as a public place within the alcohol control area boundaries.



(C) Crown Copyright Reserved.
Data sourced from Land Information New Zealand Data Service. Licensed for re-use under the Creative Commons Attribution 4.0 International Licence.
The information in this map was derived from digital databases. Care was taken in the creation of this map, however, Whangarei District Council and its contactors cannot accept any responsibility for errors, omissions or positional accuracy. Not to be used for navigation.
Public places shown as indicative. Mean low water springs shown as indicative.

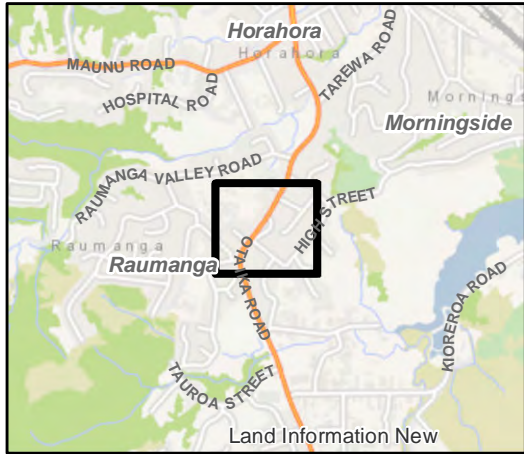


MAP 7 - OTAIKA

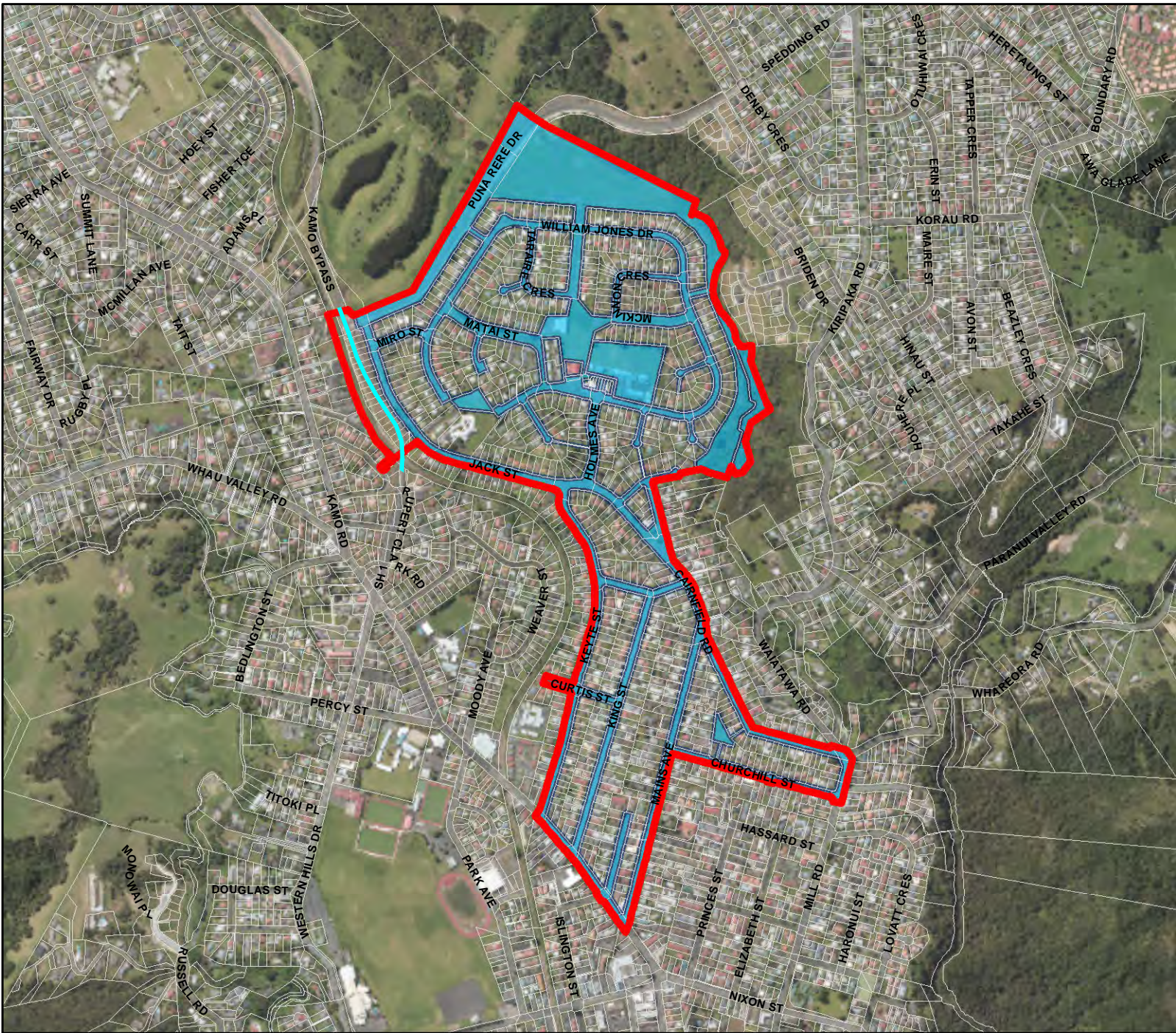
-  Alcohol Control Area Boundary
-  Public Place

Operative times:
24 hours a day, 7 days a week



This map provides indicative public places within the alcohol control area. It is up to constable discretion to determine whether a place is a public place in accordance with section 147 of the Local Government Act 2002 for enforcement purposes, and may include a location that is not indicated as a public place within the alcohol control area boundaries.



(C) Crown Copyright Reserved.
Data sourced from Land Information New Zealand Data Service. Licensed for re-use under the Creative Commons Attribution 4.0 International Licence.
The information in this map was derived from digital databases. Care was taken in the creation of this map, however, Whangarei District Council and its contactors cannot accept any responsibility for errors, omissions or positional accuracy. Not to be used for navigation.
Public places shown as indicative. Mean low water springs shown as indicative.

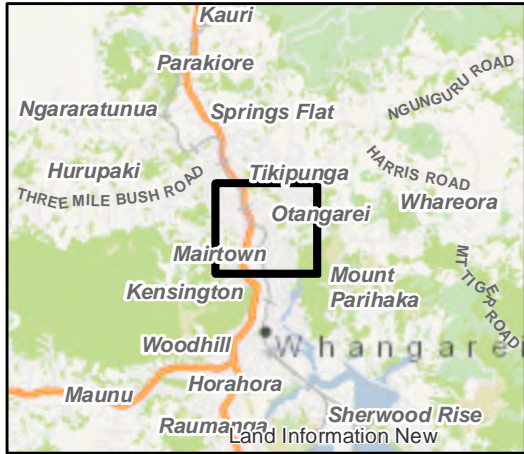


MAP 8 - OTANGAREI

-  Alcohol Control Area Boundary
-  Public Place

Operative times:
24 hours a day, 7 days a week


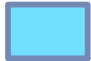
This map provides indicative public places within the alcohol control area. It is up to constable discretion to determine whether a place is a public place in accordance with section 147 of the Local Government Act 2002 for enforcement purposes, and may include a location that is not indicated as a public place within the alcohol control area boundaries.



(C) Crown Copyright Reserved.
Data sourced from Land Information New Zealand Data Service. Licensed for re-use under the Creative Commons Attribution 4.0 International Licence.
The information in this map was derived from digital databases. Care was taken in the creation of this map, however, Whangarei District Council and its contractors cannot accept any responsibility for errors, omissions or positional accuracy. Not to be used for navigation.
Public places shown as indicative. Mean low water springs shown as indicative.

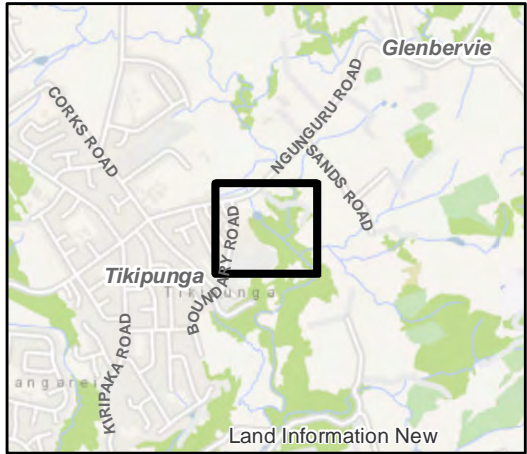


MAP 9 - OTUIHAU; WHANGAREI FALLS

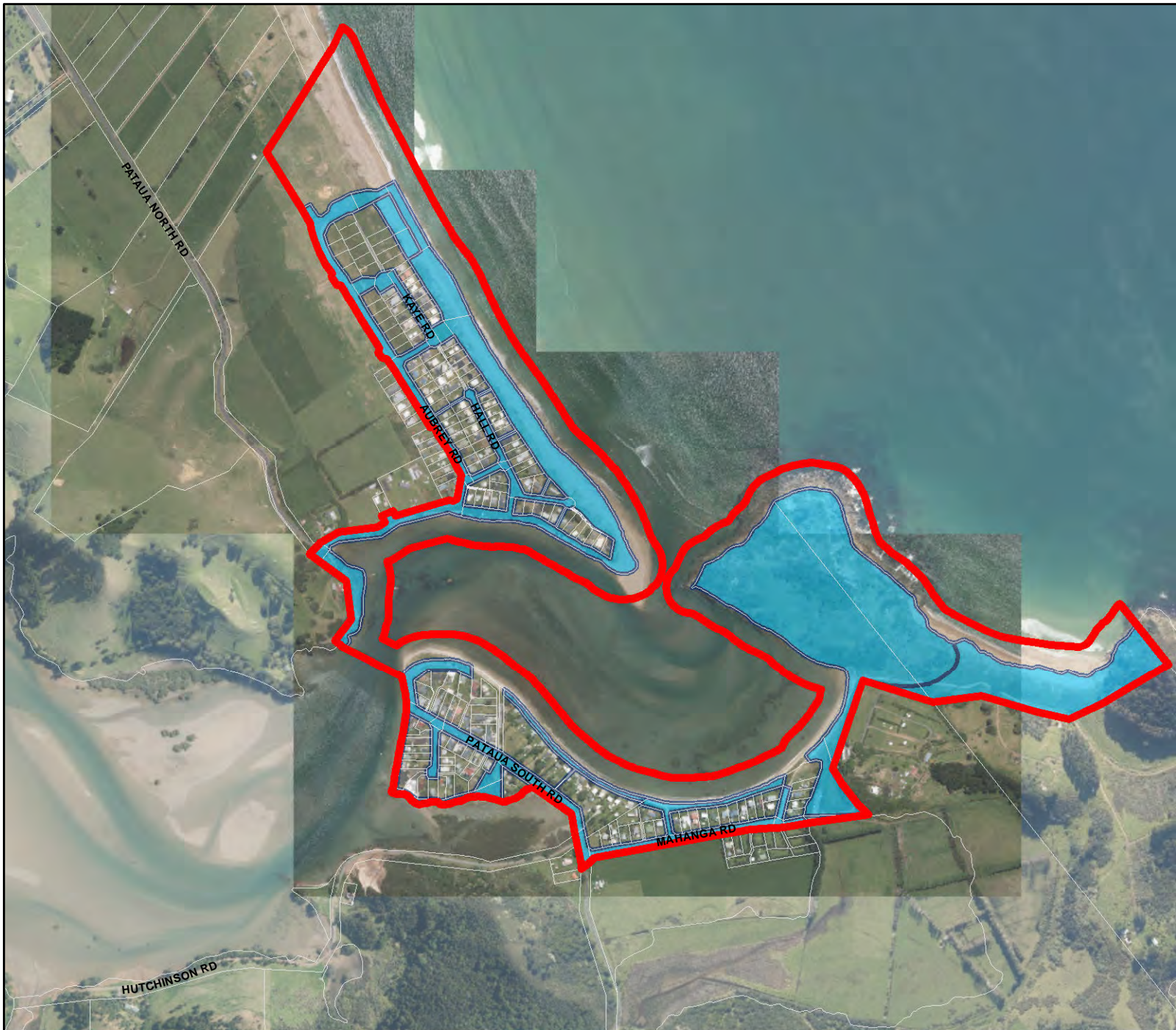
-  Alcohol Control Area Boundary
-  Public Place

Operative times:
24 hours a day, 7 days a week


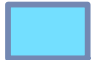
This map provides indicative public places within the alcohol control area. It is up to constable discretion to determine whether a place is a public place in accordance with section 147 of the Local Government Act 2002 for enforcement purposes, and may include a location that is not indicated as a public place within the alcohol control area boundaries.



(C) Crown Copyright Reserved.
Data sourced from Land Information New Zealand Data Service. Licensed for re-use under the Creative Commons Attribution 4.0 International Licence.
The information in this map was derived from digital databases. Care was taken in the creation of this map, however, Whangarei District Council and its contactors cannot accept any responsibility for errors, omissions or positional accuracy. Not to be used for navigation.
Public places shown as indicative. Mean low water springs shown as indicative.



MAP 10 - PATAUA NORTH AND SOUTH

-  Alcohol Control Area Boundary
-  Public Place

Operative times:
24 hours a day, 7 days a week


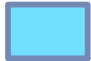
This map provides indicative public places within the alcohol control area. It is up to constable discretion to determine whether a place is a public place in accordance with section 147 of the Local Government Act 2002 for enforcement purposes, and may include a location that is not indicated as a public place within the alcohol control area boundaries.



(C) Crown Copyright Reserved.
Data sourced from Land Information New Zealand Data Service. Licensed for re-use under the Creative Commons Attribution 4.0 International Licence.
The information in this map was derived from digital databases. Care was taken in the creation of this map, however, Whangarei District Council and its contactors cannot accept any responsibility for errors, omissions or positional accuracy. Not to be used for navigation.
Public places shown as indicative. Mean low water springs shown as indicative.

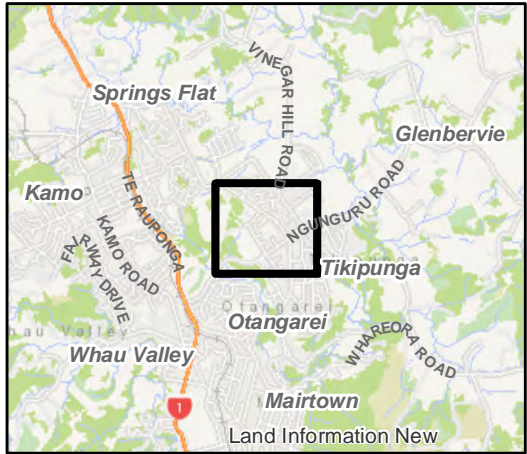


MAP 11 - TIKIPUNGA

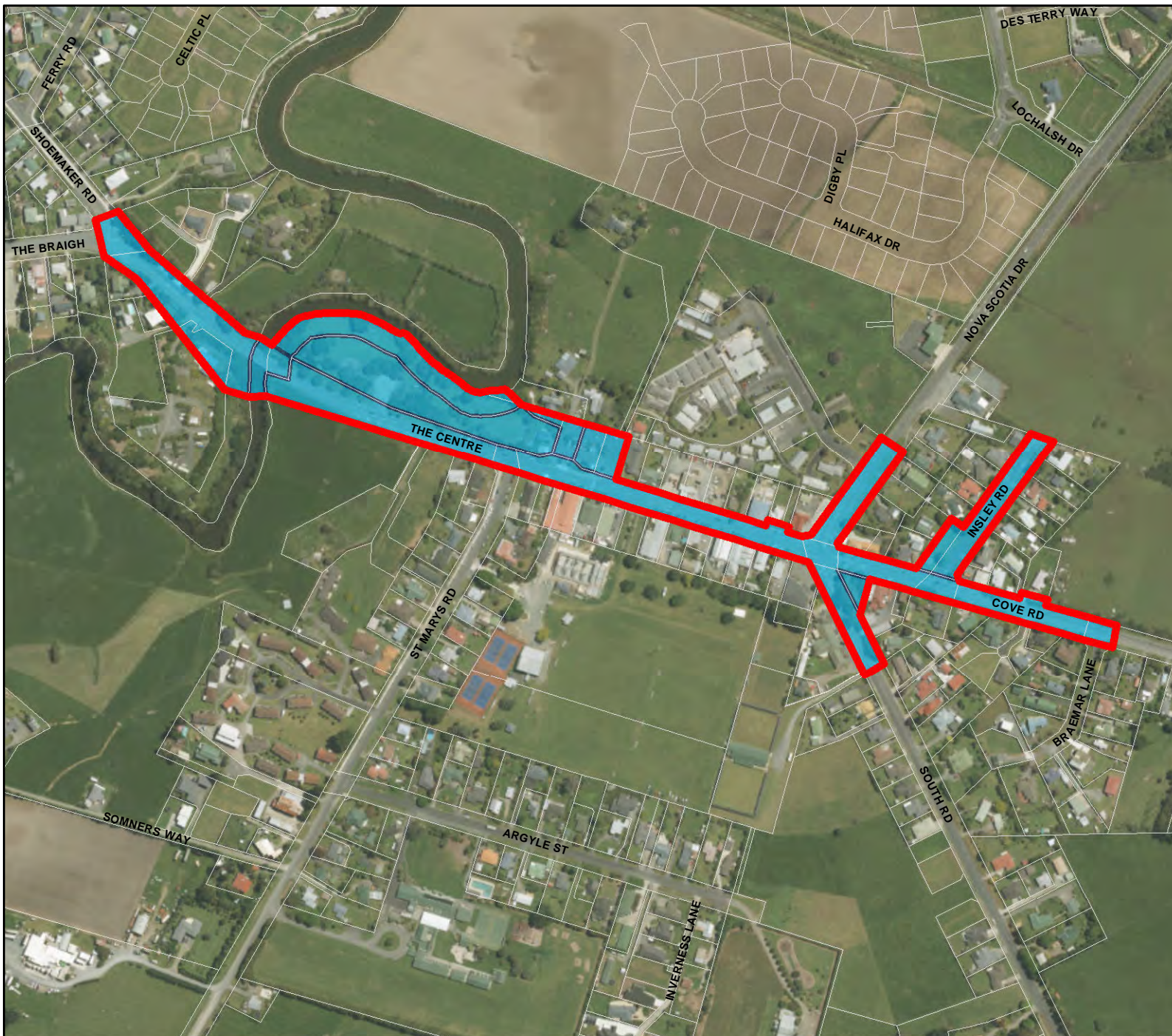
-  Alcohol Control Area Boundary
-  Public Place

Operative times:
24 hours a day, 7 days a week

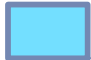
This map provides indicative public places within the alcohol control area. It is up to constable discretion to determine whether a place is a public place in accordance with section 147 of the Local Government Act 2002 for enforcement purposes, and may include a location that is not indicated as a public place within the alcohol control area boundaries.



(C) Crown Copyright Reserved.
Data sourced from Land Information New Zealand Data Service. Licensed for re-use under the Creative Commons Attribution 4.0 International Licence.
The information in this map was derived from digital databases. Care was taken in the creation of this map, however, Whangarei District Council and its contactors cannot accept any responsibility for errors, omissions or positional accuracy. Not to be used for navigation.
Public places shown as indicative. Mean low water springs shown as indicative.

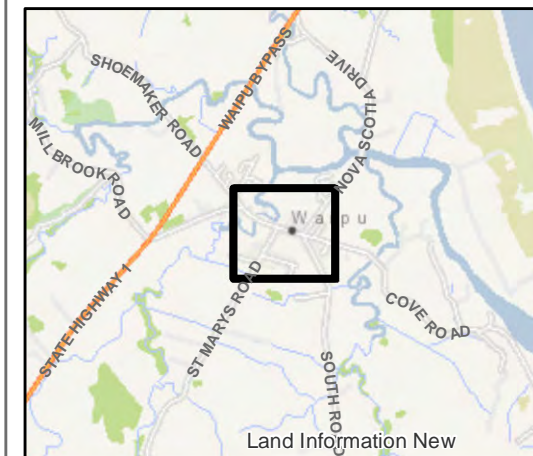


MAP 12 - WAIPU

-  Alcohol Control Area Boundary
-  Public Place

Operative times:
24 hours a day, 7 days a week



This map provides indicative public places within the alcohol control area. It is up to constable discretion to determine whether a place is a public place in accordance with section 147 of the Local Government Act 2002 for enforcement purposes, and may include a location that is not indicated as a public place within the alcohol control area boundaries.



(C) Crown Copyright Reserved.
Data sourced from Land Information New Zealand Data Service. Licensed for re-use under the Creative Commons Attribution 4.0 International Licence.
The information in this map was derived from digital databases. Care was taken in the creation of this map, however, Whangarei District Council and its contactors cannot accept any responsibility for errors, omissions or positional accuracy. Not to be used for navigation.
Public places shown as indicative. Mean low water springs shown as indicative.

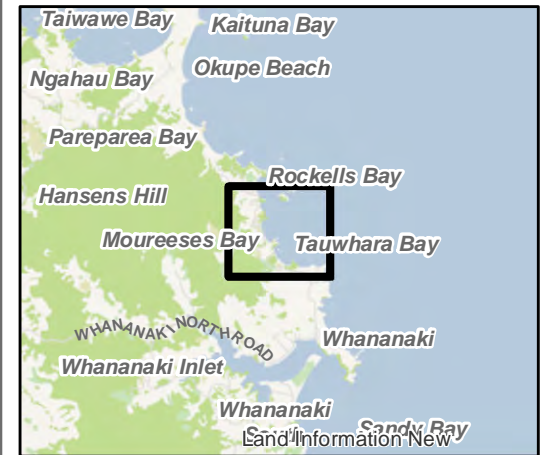


MAP 13 - WHANANAKI - MOUREESES BAY

-  Alcohol Control Area Boundary
-  Public Place


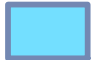
Operative times:
24 hours a day, 7 days a week

This map provides indicative public places within the alcohol control area. It is up to constable discretion to determine whether a place is a public place in accordance with section 147 of the Local Government Act 2002 for enforcement purposes, and may include a location that is not indicated as a public place within the alcohol control area boundaries.



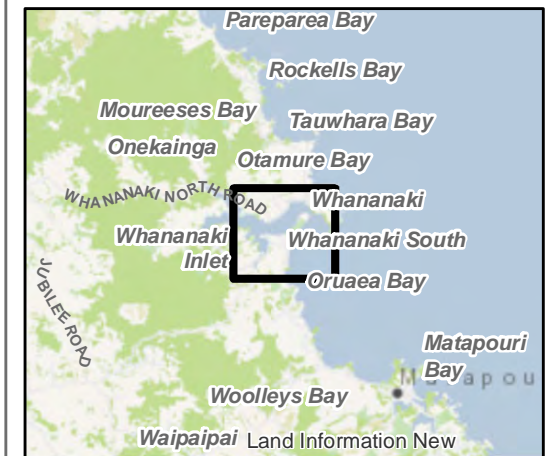
(C) Crown Copyright Reserved.
Data sourced from Land Information New Zealand Data Service. Licensed for re-use under the Creative Commons Attribution 4.0 International Licence.
The information in this map was derived from digital databases. Care was taken in the creation of this map, however, Whangarei District Council and its contactors cannot accept any responsibility for errors, omissions or positional accuracy. Not to be used for navigation.
Public places shown as indicative. Mean low water springs shown as indicative.

MAP 14 - WHANANAKI

-  Alcohol Control Area Boundary
-  Public Place

Operative times:
24 hours a day, 7 days a week

This map provides indicative public places within the alcohol control area. It is up to constable discretion to determine whether a place is a public place in accordance with section 147 of the Local Government Act 2002 for enforcement purposes, and may include a location that is not indicated as a public place within the alcohol control area boundaries.



(C) Crown Copyright Reserved.
Data sourced from Land Information New Zealand Data Service. Licensed for re-use under the Creative Commons Attribution 4.0 International Licence.
The information in this map was derived from digital databases. Care was taken in the creation of this map, however, Whangarei District Council and its contactors cannot accept any responsibility for errors, omissions or positional accuracy. Not to be used for navigation.
Public places shown as indicative. Mean low water springs shown as indicative.

